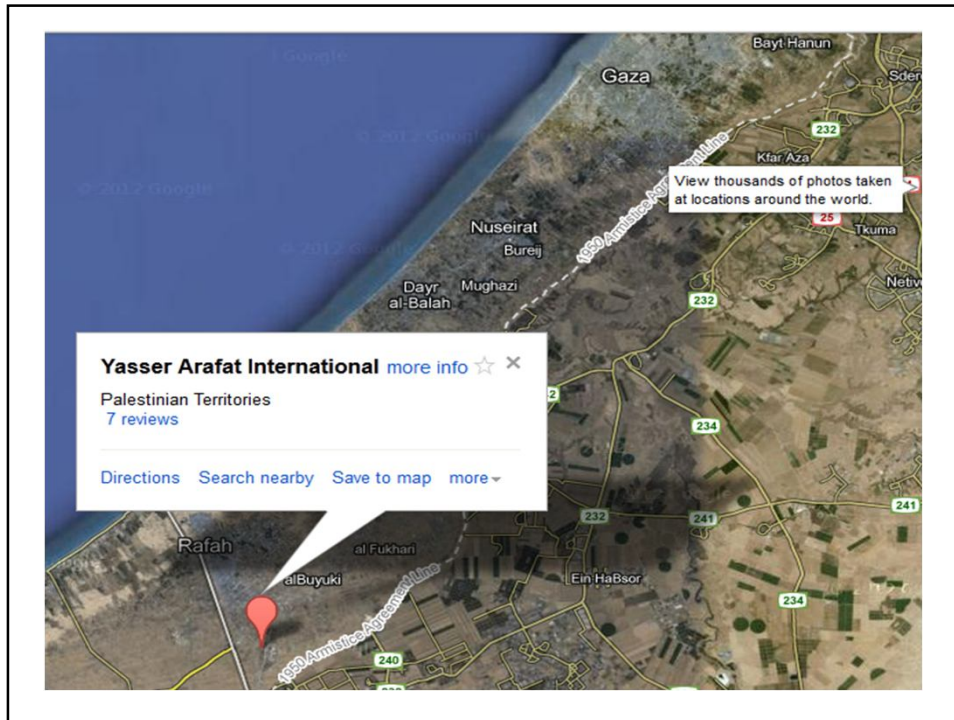




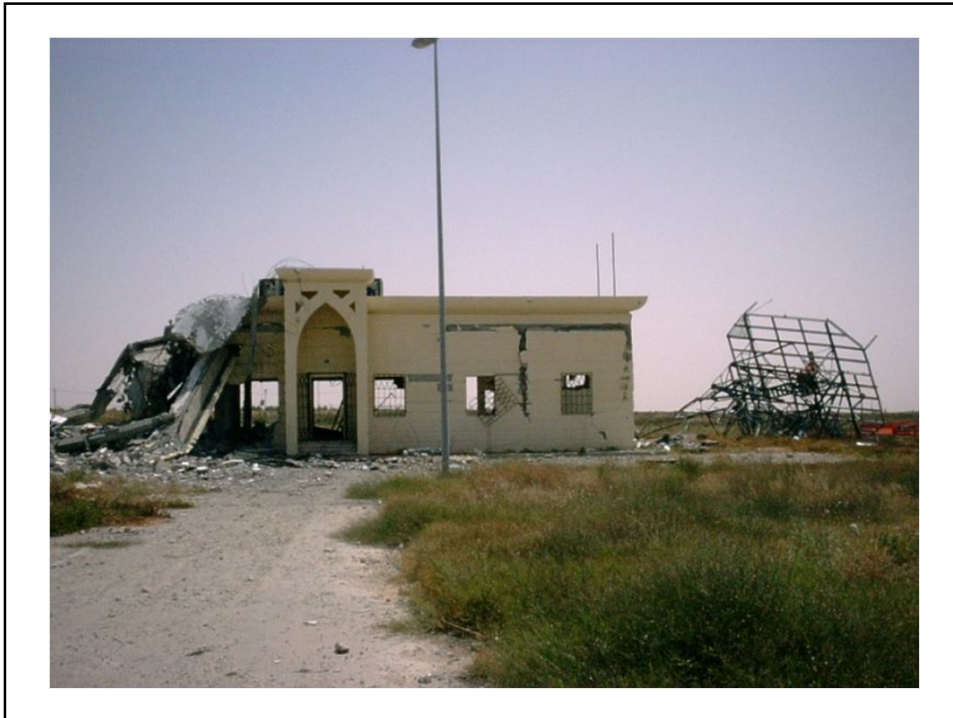
Basic information

- **Funding by:**
Japan, Egypt, Saudi Arabia, Spain, and Germany.
- **Designed by:** Moroccan architects
- **Engineers funded by:**
Morocco's King Hassan II
- **Total costs:** \$86 million
- **Opened on:** 24th November 1998



Current Status

- **The radar station and control tower were destroyed by Israel Occupation Forces in 2001**
- **and Israeli bulldozers cut the runway apart in January 2002**



Runways

- **The airport has one runway**
- **The runway is 3080m long x 60m width**
- **Now it is no longer operational due to extensive damage to the north and middle sections of the runway by the Israeli Forces**

Satellite photo of the destroyed runway



Buildings and Terminal

- **The total area of the airport is stated in local units as "2,350 dunams", or 235 hectares (2.35 km²)**
- **The main terminal building is a two-story 4,000-square-metre**
- **Arab Islamic designed building which is decorated with Moroccan tile, features glass windows framed by arches, and has state-of-the-art equipment. A control tower faces the runway and apron.**



Buildings and Terminal

- **The airport was staffed by a total of 400 personnel**
- **There were no ramps for passengers to disembark directly to the terminal. Stairs were brought out to the planes parked on the apron**



Buildings and Terminal

- **Facilities within the terminal building included**
 - VIP Lounge
 - Baggage Area
 - Customs and Immigration
 - Two Restaurants
 - Medical Facilities
 - First Aid Clinic
 - Bank
 - Post Office
 - Tourist Office
 - Security Office

Buildings and Terminal

- **The airport included 19 other buildings:**
 - Fuel Stations – Palestinian Petroleum Corporation
 - Aircraft Hangars
 - ATS Communication Tower – destroyed
 - Passenger Services
 - Cargo Terminals
 - Airline Operations (Ground Services)
 - Fire and Rescue
 - Parking Lot
 - Maintenance Workshop
 - ATC Watchtower/Control Tower (28 metres (92 ft) in height)